



CLEAN CLIMBER TILE

DATASHEET

www.stockz.eu

CUSTOMER CARE COMES FIRST!

Stockz B.V. is founded in 2017 by two ambitious entrepreneurs. They recognized that too often fitness flooring was seen as an afterthought, which lead to various issues such as:

- Missed opening dates because of untimely deliveries
- quality issues because of incorrect decisions on what product to lay in which area of the health club;
- Budget challenges because of significant overspending due to urgency;

Large European rubber flooring manufacturers were not organized to deliver smaller, steady supplies at the right quality and level service to an industry so specific with it's demands and wishes as the fitness industry.

Stockz differentiates its self by being able to deliver a vast range of high quality rubber floor coverings, directly from stock, at a competitive level! We also pride ourselves in the fact that we contribute significantly to the circular economy; our rubber products consist almost exclusively of recycled car and truck tires.

We stock products such as:

- Sportsflooring by roll
- Fitness tiles
- SBR playground tiles
- Various rubber granulate underlay solutions
- Tile carriers
- Anti-slip mats for load securing
- Foam from recycled mattresses
- Various other technical products made from crumb rubber and/or vulcanized rubber

Stockz holds office and warehouse in the Netherlands

Stockz B.V.
Rondweg 26
8091 XB Wezep

YOU ARE WELCOME TO COME AND SEE US!



 STOCKZ



TABLE OF CONTENTS

I.	THICKNESS & COLOURS	PAGE 02
-----------	--------------------------------	----------------

II.	SPORTSFLOORING PUZZLES	PAGE 04
------------	-------------------------------	----------------

III.	PREPARATION	PAGE 06
-------------	--------------------	----------------

IV.	INSTALLATION	PAGE 07
------------	---------------------	----------------

V.	CLEANING	PAGE 08
-----------	-----------------	----------------

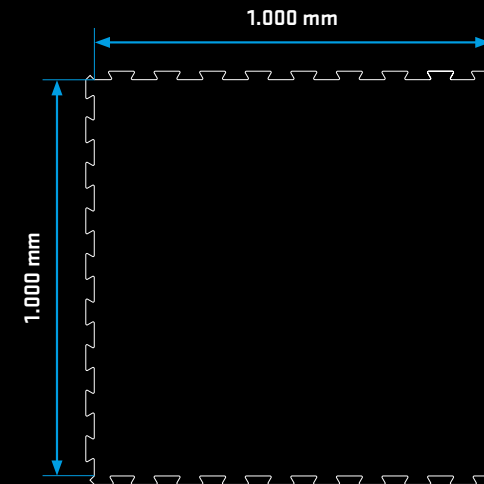
VI.	BENEFITS	PAGE 10
------------	-----------------	----------------

01.	BLACK RAINBOW	PAGE 12
------------	----------------------	----------------

I. THICKNESS & COLOURS

Our Puzzle Tiles are available in a suitable thickness for every purpose.
From as thin as **6 mm** all the way up, in **2 mm** increments, to **10 mm**.
Our standard puzzle dimensions are 100 x 100 cm.

THICKNESSES



OUR COLOURS

BLACK RAINBOW



II. SPORTSFLOORING PUZZLES

The sportsflooring puzzle tiles are manufactured from recycled rock climbing shoe rubber and recycled black rubber crumb from truck tires. This combination of materials gives the flooring a very fine and smooth surface with a lot of grip. Each tile has a unique colour pattern due to the climbing shoe rubber.

Our highly compact and maximally robust rubber floor covering is immune to moisture and water, rot proof, elastic, insulates against impact sound and is ready for the fitness area of your gym (but also suitable for a wider range of applications:

exhibitions, trade fairs and booths, fitness centres, crosstraining boxes, leisure rooms, sports centres, cloakrooms, ice rinks, mountain stations and many more facilities).



III. PREPARATION

SUBFLOOR

The surface must be smooth, level (levelled) and clean/dry.

PREPARATION

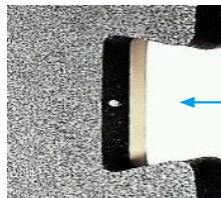
- We recommend leaving the puzzles at room temperature for a few hours (ideally 24) before final laying and cutting to allow the surface to acclimatise.
- Underfloor heating must be turned off 24 hours before installation and must only be turned back on after the adhesive has cured.

GLUE TO THE SUBFLOOR

For complete surface adhesion and minimal visibility of the seams, we recommend gluing the rubber to the substrate. In this case, the glue manufacturer's specific adhesive recommendations should be followed. If you have any doubts about the substrate or areas of application, please contact the relevant adhesive glue manufacturer directly.

IV. INSTALLATION

Interlock the puzzles and close the joints with a rubber hammer.



Note the marking in the laying direction for puzzle mats in order to avoid a checkerboard effect.

Make sure that the white markings always points in the same direction!

LOOSE LAY

We recommend gluing the puzzle tiles to the subfloor for the best possible result. Often, however, the puzzle tiles are laid loose, this is possible for a temporary floor such as a showroom or a trade fair. This will not give the best results for longer or more intensive use. Pay attention to the linear expansion of the rubber tiles when laying, especially with fluctuations in temperature and humidity. When uncertain, please consult us prior to install.

CUTTING

The material can be cut using a sharp knife or a carpet knife.

V. CLEANING

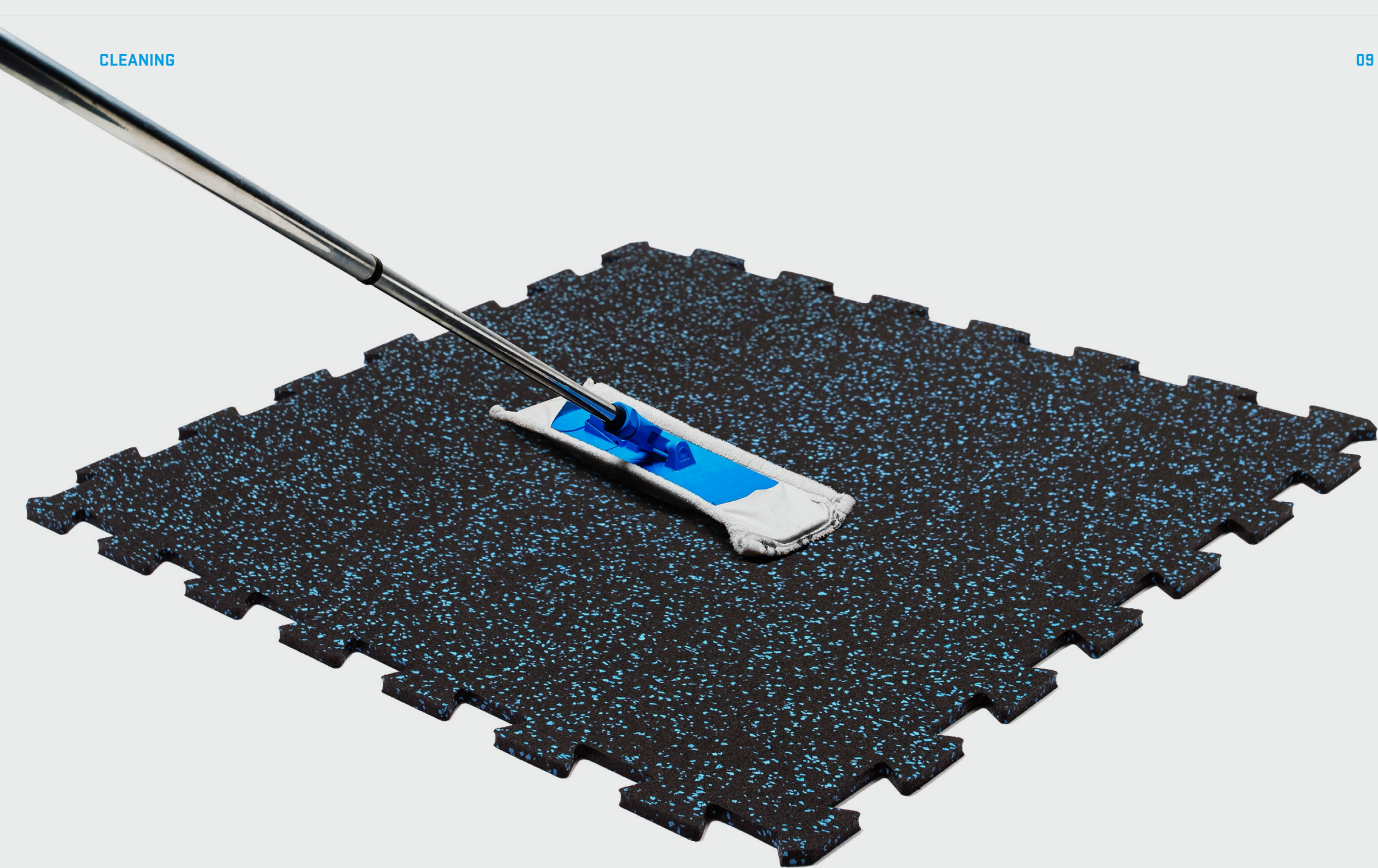
CLEANING

To prevent excessive dirt on the floor, we recommend installing dirt traps at entrances. Keep the floor free of oil, petrol and acids. The floor is best cleaned with a damp cloth or mop. In addition, regular sweeping or vacuuming is sufficient. Slightly adhering dirt can be removed with a damp cloth. Heavier dirt can be cleaned with a mild detergent or mild soap dissolved in water. Always clean with clean water afterwards.

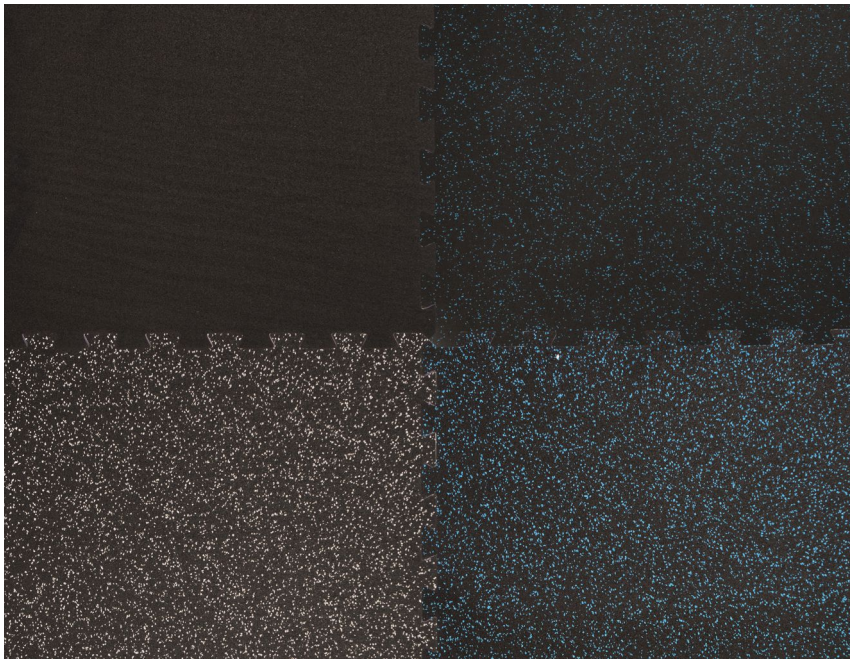
Stains must be removed as soon as possible because certain substances can react with the surface. After this, these stains are very difficult to remove, or can no longer be removed at all. We always advise to contact a professional party for cleaning the floors. No claims can be accepted when unauthorized cleaning products are used.

REMARKS:

Although highly compressed, it can still absorb slightly porous surface liquids. So, depending on the application, for hygienic reasons and to simplify cleaning, a 2-K PU waterproof sealant or hardwax can be applied to the installed floor covering using a suitable coating roll.



VI. BENEFITS



INTERLOCKING PUZZLE SYSTEM



EUROPEAN MANUFACTURED



100% RECYCLED RUBBER USED



ODOURLESS

01. BLACK RAINBOW

DIMENSIONS

	1.000 x 1.000 mm
THICKNESSES	15 mm • 20 mm
TOLERANCES	WIDTH ± 1,5 % • LENGTH ± 1,5 %
COMPOSITION	90% SBR granules, 10% rubber granules from recycled climbing shoes, bonded with PU

MATERIAL PROPERTIES

- TOUGH ELASTIC • HIGH COMPRESSION RESISTANCE AND IMPACT STRENGTH • SKID AND SPIKE RESISTANT
- NON-SLIP • HIGH ABRASION RESISTANCE • COMFORTABLE • NOISE INSULATING.

SPECIFICATIONS

BULK DENSITY TOPLAYER	Approx. 1.400 kg/m ³
BULK DENSITY SUBPLAYER	Approx. 1.000 kg/m ³
SHOCK ABSORPTION	61% EN 14808
VERTICAL DEFORMATION	5 mm EN 14809
HEAD INJURY CRITERIA (HIC) TEST	1,5 m EN 1177
EU FIRE CLASSIFICATION	E _{F1}
DYNAMIC COEFFICIENT OF FRICTION:	Dry slip resistance
THERMAL RESISTANCE	0,16 m ² .K/W
COMPLIANCE WITH CONTENT OF PENTACHLOROPHENOL	
ANTISTATIC FLOOR COVERING	



THANK YOU